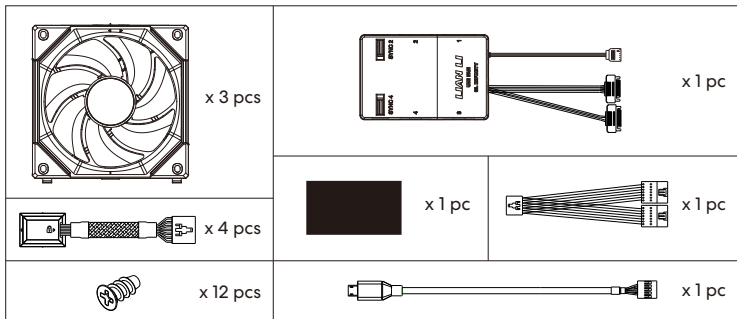
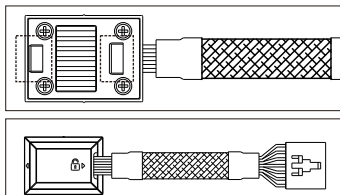


UNI FAN SL-INF RGB

Package Contents / 包裝內容物

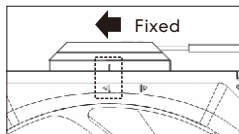
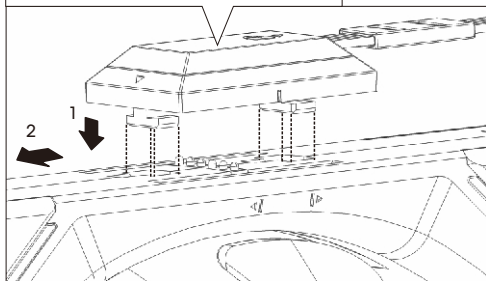


Power Module Installation / 電源片安裝

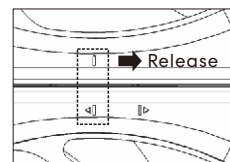
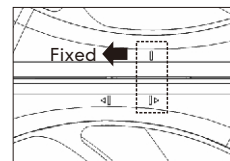
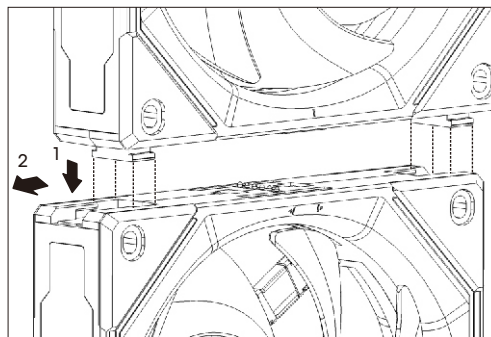


Note! The socket for the power module are in different size, please be aware of the direction.

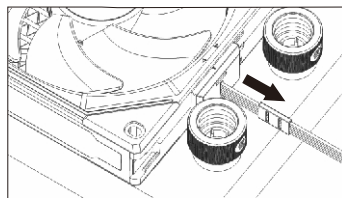
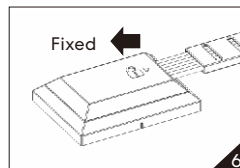
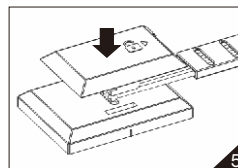
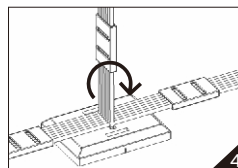
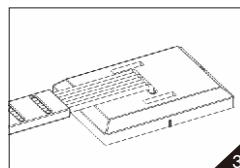
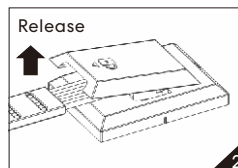
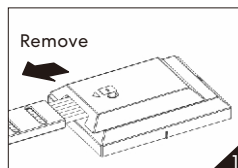
注意! 電源片分為大小兩種卡榫, 安裝時須注意方向性。



Fan to Fan Connection / 風扇連接風扇



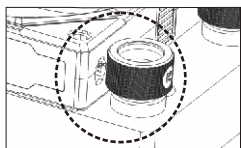
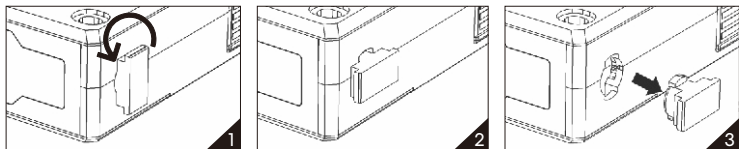
Steps to Switch Orientation of the Cable on the Power Module / 電源片電線轉換方向示意



Note! The top cover is removable if it is affected by the radiator inlet and outlet, and route the cable vertically.

注意! 若遇到水冷排水位置影響電源片上蓋, 可將上蓋移除, 以垂直方式走線。

Remove the Fan Interlocking Key / 風扇扣鎖拆除



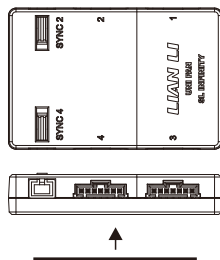
Note! The fan interlocking key is removable if it is affected by the radiator inlet and outlet.

注意! 若遇到水冷排水位置影響風扇扣鎖, 可將風扇卡扣鎖移除。

Use of Magnetic Adhesive Pad / 磁性膠墊使用



Remove the adhesive
撕下雙面膠



Restriction of Controller / 控制器的限制

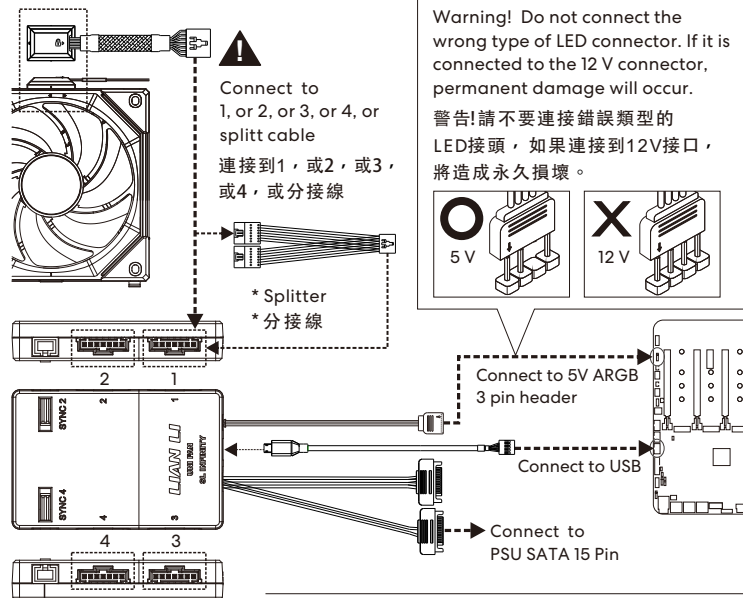
Maximum output of controller when connected BOTH SATA 15 PIN cable:

1. The maximum total output of the controller supports up to 29W.
2. Use L-Connect 3 to set static white, please lower the brightness.
3. When sync to motherboard and set as 100% brightness of static white, the controller supports up to 8 UNI FAN SL Infinity.
4. Each SM type port supports up to 5W. (2 SM type port on controller)

控制器 2 個 SATA 15 PIN 線材電源全接情況下, 最大輸出如下:

1. 控制器最大輸出為 29 W。
2. 採用 L-Connect 3 軟體控制風扇設為定色白光, 請將白光亮度降低。
3. 同步主機板亮度開至 100% 的定色白光時, 最多支援 8 顆 infinity Fan。
4. 控制器上的 SM type 輸出口最大支援 5 W (控制器上有 2 個 SM type 輸出口)。

Controller Cable Connection / 控制器線材連接



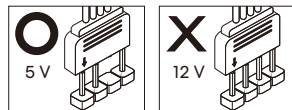
Connect to 1, or 2, or 3, or 4, or splitt cable
連接到 1, 或 2, 或 3, 或 4, 或分接線

* Splitter
* 分接線



Warning! Do not connect the wrong type of LED connector. If it is connected to the 12V connector, permanent damage will occur.

警告! 請不要連接錯誤類型的 LED 接頭, 如果連接到 12V 接口, 將造成永久損壞。



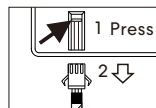
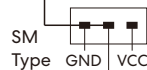
Connect to 5V ARGB 3 pin header

Connect to USB

Connect to PSU SATA 15 Pin

* Splitter / 分接線

- Control with L-Connect 3:
Connect up to 8 UNI FAN SL Infinity with splitter when set as static white, lower the brightness if necessary.
- Control with Motherboard software:
Connect up to 5 UNI FAN SL Infinity with splitter when set as 100% brightness static white
- 採用 L-Connect 3 軟體控制燈效:
使用此轉接線串接 8 顆風扇, 並設定為定色白光, 將白光亮度降低。
- 同步主板燈效軟體:
亮度開至 100% 定色白光模式, 使用此轉接線材, 最多支援 5 顆 Infinity Fan。



Note! Press and pull out the connector to release the cable.

注意! 按下再拉出線材接頭。