



MX315W

Your advantages

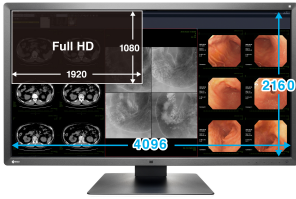


The 31.1" colour monitor impresses with 4K resolution (4,096 x 2,160 pixels) that ensure crisper details. The MX315W also shines in terms of colour purity and illumination thanks to the Digital Uniformity Equalizer. This allows the MX315W to correctly display hues and greyscale tones of radiological images across the entire screen. The DICOM display curve is preset during production and guarantees proper greyscale reproduction. The MX315W monitor features sensors for ambient light and calibration. Given its size and picture quality, the MX315W is particularly well suited for diagnosing cross-sectional imaging and viewing 3D reconstructions.

- ✓ 4K colour display with consistently high and stable brightness
- ✓ greyscales with DICOM hue curve
- ✓ integrated sensor for automatic, precise calibration of white balance and the tonal value
- ✓ automatic luminance distribution control (Digital Uniformity Equalizer)
- ✓ set up for acceptance and consistency testing in accordance with DIN 6868-157 and QS-RL
- ✓ presence sensor means monitor is ready for immediate use whenever the user is in front of it
- ✓ ergonomic, attractive design
- ✓ compact dimensions, narrow bezels, and integrated power supply

Features

Excellent image quality for the finest details



Thanks to the high 8 Mega-pixels (colour) resolution, a strong contrast ratio of 1300:1 and stable brightness of up to 450 cd/m², the monitor offer excellent image quality. Even the differences

between the finest details are shown – regardless of your viewing angle. This is a great advantage if multiple physicians are looking at the screen.

Consistently secure image quality

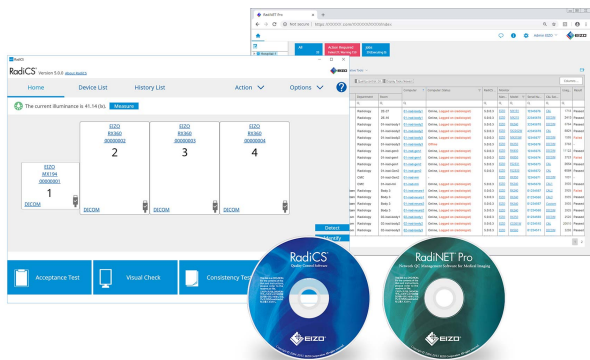
The optional EIZO RadiCS software to secure image quality enables extensive maintenance and testing of monitors and includes calibration, acceptance and constancy testing, and the archiving of all areas. If you are working on multiple stations, the use of the RadiNET Pro is recommended. This can be used to centrally control the calibration of all monitors, including data history. This saves you a significant amount of time and ensures consistently high image quality across the entire setup. The basic version RadiCS LE is already included with the RadiForce GX, RX, and MX/MS models.

[Learn more about the RadiCS application classes](#)

[Learn more about RadiCS LE software \(included in the delivery\)](#)

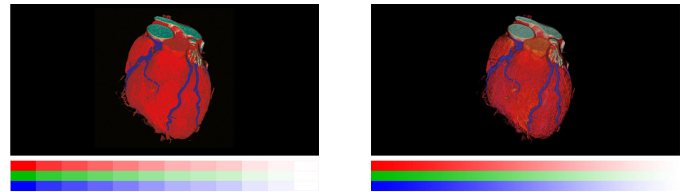
[Learn more about RadiCS software \(optionally available\)](#)

[Learn more about RadiNet Pro software \(optionally available\)](#)



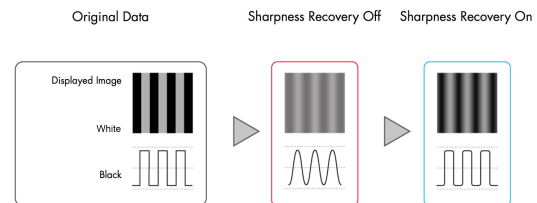
One billion colour tones thanks to 13 bit LUT

Colour rendering is controlled by a 13 bit look-up table (LUT), up to 10 bits of which are available in the DisplayPort connection. This produces a resolution with a maximum of 1 billion colour tones. The rendering characteristic and fine structures required for diagnostics can therefore be precisely identified.



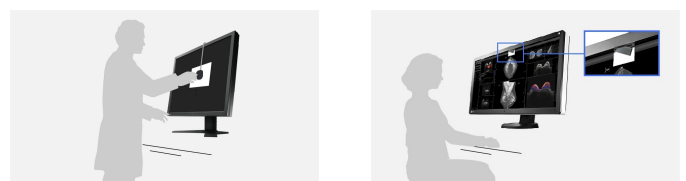
Blur reduction

LCD panels with a high brightness level tend to have more blurry image rendering thanks to over-framing than would be possible in comparison with an acquired exposure. Therefore, EIZO offers blur reduction anchored in monitor hardware. It retrieves details lost in the contours on the screen, meaning that the image is rendered as clearly as possible.



Balanced image quality thanks to an integrated front sensor

The precise calibration of white point and tone value characteristic curve is provided by an integrated front sensor (IFS). This measures the brightness and greyscales and calibrates the monitor autonomously according to the DICOM standard. The sensor works automatically, without restricting the field of vision of the monitor. You can save the costs, time, and effort of maintenance and rely on a consistently balanced image quality.



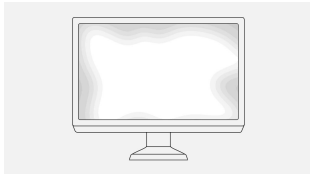
Without IFS

With IFS

Features

Uniform brightness and high colour purity

The monitor shines thanks to its high colour purity and uniform illumination. This is down to the Digital Uniformity Equalizer (DUE), which corrects imbalances automatically, pixel by pixel. Grey and colour tones of radiological and other medical images are correctly rendered over the entire display. This is vital for diagnostics.



Without DUE



With DUE

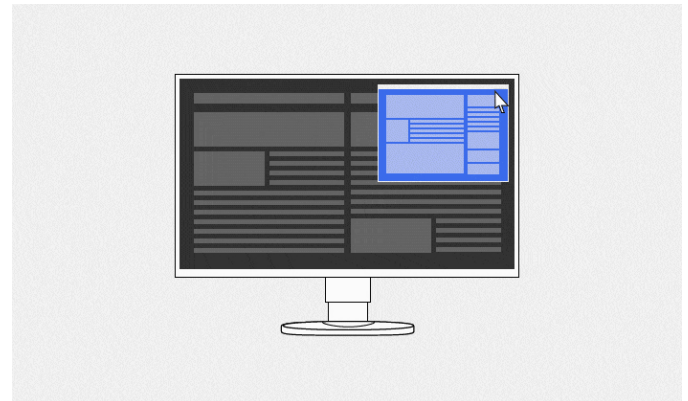
Point-and-Focus: all eyes on the analysis

The Point-and-Focus function allows you to select and focus on relevant image areas quickly using your mouse or keyboard. By adjusting the brightness and greyscale, the interesting parts of an image are highlighted by dimming the surrounding areas.



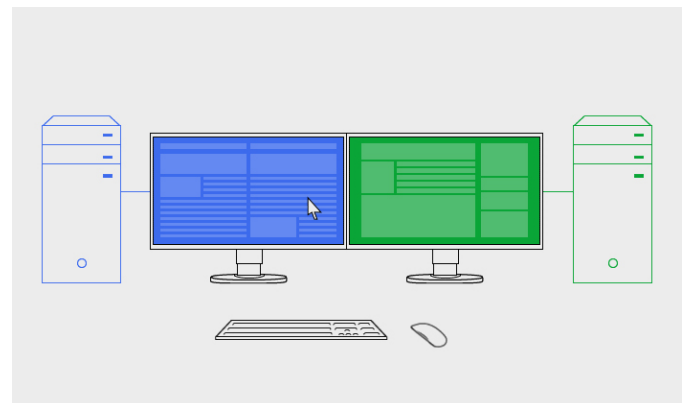
Hide-and-Seek: fast retrieval of information

Hide-and-Seek adds the benefit of making it possible to access reports, patient files and other information on the display quickly and efficiently without needing an additional monitor. When you move your cursor towards or away from the edge of the screen, a PinP window hides and displays information.



Switch-and-Go: just one keyboard and mouse for two systems

Switch-and-Go makes it possible to work using just one keyboard and mouse at diagnostic imaging stations that make use of two computers. You can switch between the two systems simply by moving your cursor from one screen to the other. This ensures greater work efficiency and allows you to maintain a clear overview of your workstation.



FDA clearance

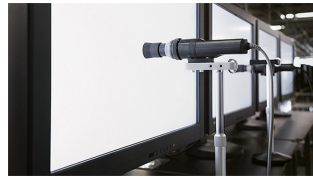
The monitor holds the FDA-510(k)-clearance for general radiography, but it does not support display of mammography images for diagnosis.

Features

Secure image quality thanks to AAPM/Euref/DIN compliance

The display properties, in particular brightness and contrast, are suited to the creation of image rendering systems compliant with DIN 6868-157. The DICOM® GSDF characteristic is already precisely configured in the factory. This means that greyscales are consistent, which is vital for diagnostics.

[Overview RadiCS application classes I to VIII](#)



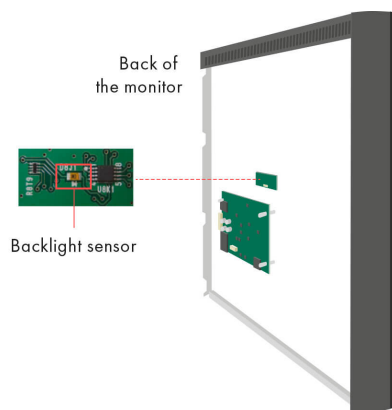
Extended durations of use thanks to automatic shut down

The monitor has an automatic shut down option for the backlight (backlight saver). This extends the duration of use. Similar to a screen saver, the LEDs turn off when the screen is not being used.

The backlight saver is part of the RadiCS software.

Constant brightness during operation

A sensor for the backlight permanently determines the luminance of the monitor. The benefit: The defined and calibrated values are rendered exactly just seconds after the monitor is turned on and remain constant during the entire period of use. The sensor is invisibly integrated in the monitor.



Multi-monitor solutions without problems

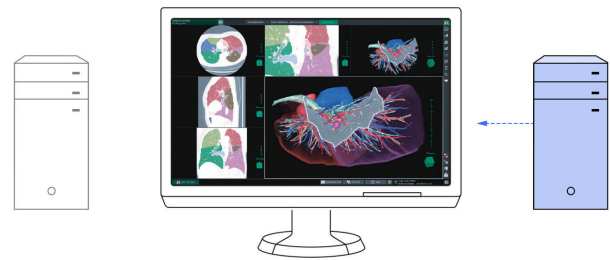
Thanks to the signal input and output, you can link several RadiForce monitors through their DisplayPort interface. This means

that you can realize multi-monitor solutions with the greatest of ease – without laborious and excessive cabling.



Connections for two computers

DisplayPort and DVI-D input enable the connection of two image signals. You can therefore connect two computers simultaneously. You can switch between them automatically or manually, if desired.



One monitor, many ports

It doesn't get easier than this: You can connect most of your devices, such as PC, laptop or cameras directly to the monitor because the monitor has a number of different ports. That makes your daily work easier.

Two-screen solution with one monitor

With the Picture-by-Picture function, two displays from separate input signals can be displayed simultaneously on a single monitor. A widescreen without annoying edges enables the simple and flexible use.



Features

For precise diagnoses: EIZO MED-XN72 graphics card

The EIZO graphics card MED-XN72 optimally supports the features, functions and settings of the RadiForce MX315W. It enables precise diagnosis and can control several monitors simultaneously. EIZO offers technical support and warranty service for the graphics card.

[Display the specifications of the MED-XN72](#)



Five-year warranty

EIZO grants a five-year warranty.* This is possible thanks to the highly developed production process based on a simple principle of success: sophisticated and innovative monitor technology, made from high-end materials.

* in Belgium: including on-site replacement service



Eye-friendly Comfort Light

EIZO offers a brand-new, easy-to-operate comfort light for radiologists who work in dark diagnosis rooms. The soft illuminance in the background of the screen reduces the strain on the eyes that frequently occurs due to constant light-dark changes between bright screens and objects in a dark environment.

[learn more about RadilLight](#)

Specification

General

Item no.	MX315W
Case color	Bicolor, black and white
Areas of application	Medicine
Product line	RadiForce

Display

Screen size [in inches]	31,1
Screen size [in cm]	79
Format	17:9
Viewable image size (width x height)	697,9 x 368
Resolution in MP	8 Megapixels (colour)
Ideal and recommended resolution	4096 x 2160 (4K)
Pixel pitch [mm]	0,1704 x 0,1704
Panel technology	IPS
Max. viewing angle horizontal	178 °
Max. viewing angle vertical	178 °
Number of colours or greyscale	1.07 billion colours (DisplayPort, 10 Bit), 16.7 million colours (DisplayPort, 8 Bit), 16.7 million colours (DVI, 8 Bit)
Colour palette/look-up table	543 billion colour tones / 13 Bit
Max. brightness (typical) [in cd/m ²]	450
Max. dark room contrast (typical)	1300:1
Response time black-white-black alternation (typical) [in ms]	20
Backlight	LED

Features & control

Preset colour/greyscale modes	DICOM, CAL1, CAL2, Text, sRGB, Custom
DICOM tone curve	✓
RadiCS application classes	II, III, IV, V, VI, VIII
Hardware calibration of brightness and light density characteristic curve	✓
Digital Uniformity Equalizer (homogeneity correction)	✓
Sensors	Ambient Light Sensor, Integrated Front Sensor, Backlight Sensor, Presence sensor
Ambient light sensor	✓
Input signal identification	✓
Picture-in-Picture	✓
Picture-by-Picture	✓
OSD language	de, en, fr, es, it, se, ja, zh
Integrated power unit	✓

Ports

Signal inputs	2x DisplayPort, DVI-D
Signal outputs/Daisy chain compatibility	1x DisplayPort 1.2
USB specification	USB 2.0
USB upstream ports	2 x type B
USB downstream ports	2 x type A
Video signal	DisplayPort, DVI dual link (TMDS)

Electric data

Power consumption (typical) [in watt]	67
Maximum Power Consumption [in watt]	125
Power Save Mode [in watt]	1,6
Power consumption off [in watt]	0
Power supply	AC 100-240V, 50/60Hz

Warranty

Warranty and service	5 years warranty
----------------------	------------------

Dimensions & weights

Weight [in kilograms]	11,7
Weight without stand [in kilograms]	7,5
Housing dimension details	Dimension drawing (PDF)
Swivel	70 °
Incline forward/backward	5 ° / 30 °
Height adjustment range [mm]	100
Hole spacing	VESA standard 100 x 100 mm

Certification & standards

Certification	CE (Medical Device), EN 60601-1, ANSI/AAMI ES60601-1, CSA C22.2 Nr. 601-1, IEC60601-1, VCCI-B, FCC-B, CAN ICES-3 (B), RCM, RoHS, China RoHS, WEEE, CCC, EAC
---------------	---

Software & accessories

Accompanying software and other accessories are available for download	RadiCS LE
Additional supply	Power cord, Signal cable DVI-D - DVI-D, 2x signal cable DisplayPort - DisplayPort, Short DisplayPort signal cable - DisplayPort, USB 2.0 cable, EIZO LCD Utility Disk (incl. PDF manual)
Accessories	RadiCS (The RadiCS software provides extensive validations and automatic adjustment to ensure constant and consistent image reproduction on all RadiForce screens.), RadiNET Pro (EIZO software for network-based quality management in large facilities - with remote functionality for monitors), RadiLight (Comfort Light for Reading Rooms - Easily attachable light for RadiForce medical LCD monitors.)
Recommended graphics card	MED-XN72