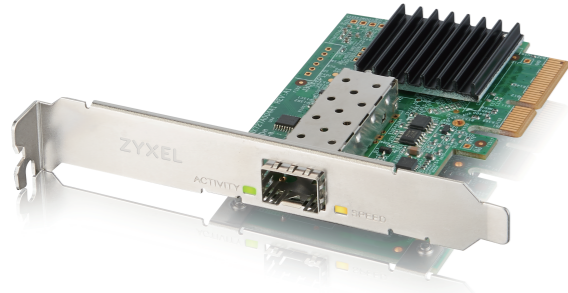


ZYXEL

XGN100F





10G Network Adapter PCIe Card with Single SFP+ Port



Quick

ENGLISH | DEUTSCH | ESPAÑOL | FRANÇAIS
ITALIANO

Package Contents

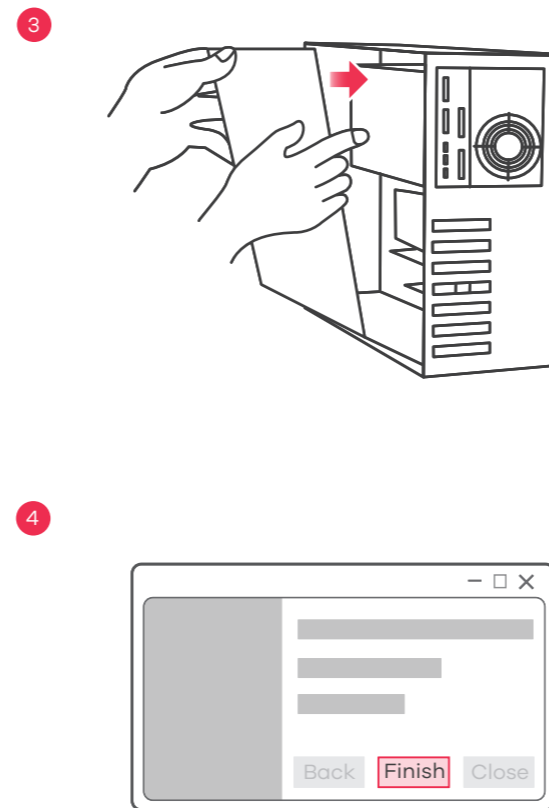
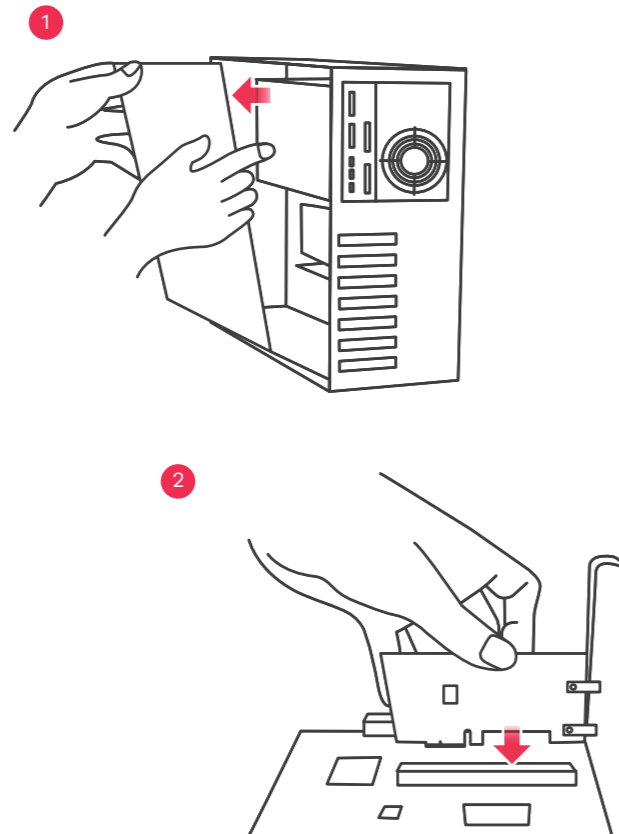
-  XGN100F
-  Low Profile Bracket
-  Quick Start Guide
-  Declaration of Conformity
Safety Warnings

Requirements

A computer with an available PCI Express 2.0 slot using one of the following operating systems:

- Windows 7, 8.0, 8.1, 10 or Server 2012
- Linux 3.10, 3.12, 3.20, 4.20 or 4.40

Hardware Installation



- EN** ① Turn off your computer, disconnect its power cord, and remove the computer case.
- ② Insert the XGN100F firmly into an available PCIe slot, and then secure its back bracket.
- DE** ① Schalten Sie Ihren Computer aus, ziehen Sie das Netzkabel ab und entfernen Sie das Computergehäuse.
- ② Stecken Sie den XGN100F fest in einen freien PCIe-Steckplatz und befestigen Sie dann die hintere Halterung.
- ES** ① Apague su ordenador, desconecte el cable de alimentación y retire la carcasa.
- ② Introduzca bien el XGN100F en una ranura PCIe disponible y a continuación asegure su soporte posterior.
- FR** ① Éteignez votre ordinateur, débranchez son cordon d'alimentation et retirez le boîtier de l'ordinateur.
- ② Insérez fermement le XGN100F dans un emplacement PCIe disponible, puis fixez son support arrière.
- IT** ① Spegni il computer, disconnetti l'alimentatore, e rimuovi la copertura del computer.
- ② Inserisci l'XGN100F nell'inserto PCIe, premendo bene, e poi aggancia la staffa posteriore.

- EN** ③ Put back the computer case, connect the computer power cord, and turn the computer back on.
- ④ A supported operating system will automatically install the driver, and prompt you when completed.
- DE** ③ Bringen Sie das Computergehäuse wieder an, schließen Sie das Netzkabel des Computers an und schalten Sie den Computer wieder ein.
- ④ Ein unterstütztes Betriebssystem installiert den Treiber automatisch und wird nach Fertigstellung eine Meldung anzeigen.
- ES** ③ Vuelva a colocar la carcasa del ordenador, conecte el cable de alimentación y enciéndalo.
- ④ Un sistema operativo compatible instalará automáticamente el controlador y le avisará cuando haya finalizado.
- FR** ③ Remettez le boîtier de l'ordinateur, branchez le cordon d'alimentation de l'ordinateur et remettez l'ordinateur sous tension.
- ④ Un système d'exploitation pris en charge installe automatiquement le pilote et vous avertit lorsque l'opération est terminée.
- IT** ③ Rimonta la copertura del computer, connetti l'alimentatore, e riaccendi il computer.
- ④ Il sistema operativo installerà automaticamente il driver, e ti avviserà a installazione completata.

LEDs

| | | |
|----------|-------|--|
| SPEED | Amber | On - 10G Connection. Off - Disconnected or fail. |
| | Green | On - 1G Connection. Off - Disconnected or fail. |
| ACTIVITY | Green | On - No Data Transmission. Blinking - Data transmission. Off - Disconnected or fail. |

Troubleshooting / Download Drivers

- Make sure your computer is using a supported operating system.
- Manually install the card driver. If a supported operating system does not automatically install the driver, go to https://www.zyxel.com/support/download_landing.shtml and search for XGN100F. Download the driver, and install it.

FCC

This device complies with Part 15 of the FCC Rules. Operation is subject to the following two conditions:
(1) This device may not cause harmful interference, and
(2) This device must accept any interference received, including Interference that may cause undesired operation.

ZYXEL

Your Networking Ally



Warranty Card

Thank you for purchasing a Zyxel product. Zyxel has a reputation for delivering high quality, high performance products and services to our customers. We recommend that you now visit the Zyxel website and register your product online. This will mean you can receive the latest firmware, drivers and product related information. If you still have further questions or enquiries related to the product, please contact our subsidiaries worldwide. Please note that warranty terms may vary by region. Full detailed information is available on our website, here: http://www.zyxel.com/support/warranty_information.shtml

Purchase Information

Zyxel Product Name:
Hardware Serial Number:
Date of Purchase:
(In certain countries, the warranty will be validated with seller's signature and stamp):

Support Information

- USA**
+1 800 255 4101
support@zyxel.com
- EU**
<https://support.zyxel.eu>

EU Importer

Zyxel Communications A/S
Gladsaxevej 378, 2. th. 2860 Søborg, Denmark
<https://www.zyxel.com/dk/da/>

US Importer

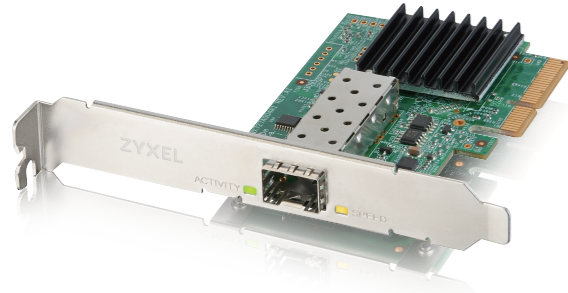
Zyxel Communications, Inc
1130 North Miller Street Anaheim, CA 92806-2001
<https://www.zyxel.com/us/en/>

Copyright ©2020 Zyxel Communications Corp. All Rights Reserved.



XGN100F



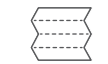

10G Network Adapter PCIe Card with Single SFP+ Port



Quick Start Guide

DANSK | NEDERLANDS | NORSK | SUOMI
SVENSKA

Package Contents

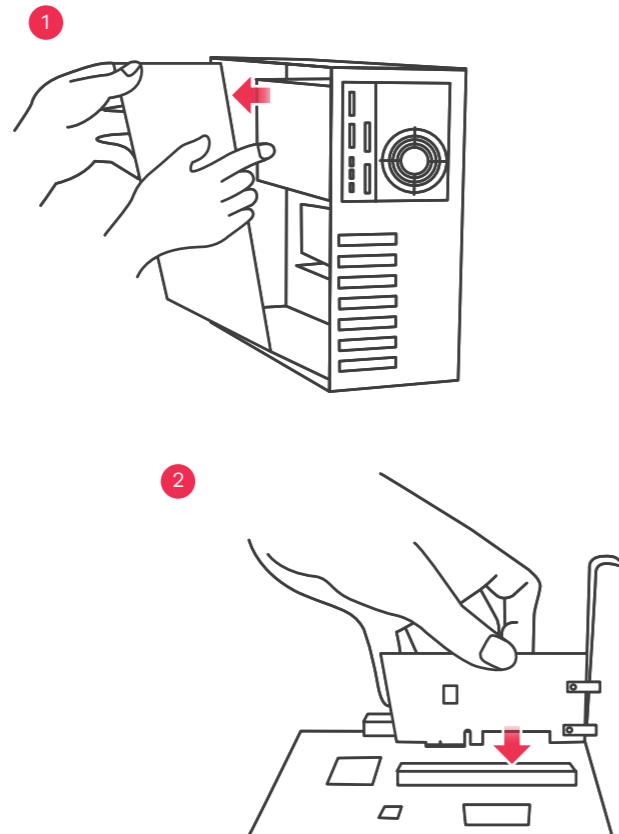
-  XGN100F
-  Low Profile Bracket
-  Quick Start Guide
-  Declaration of Conformity
Safety Warnings

Requirements

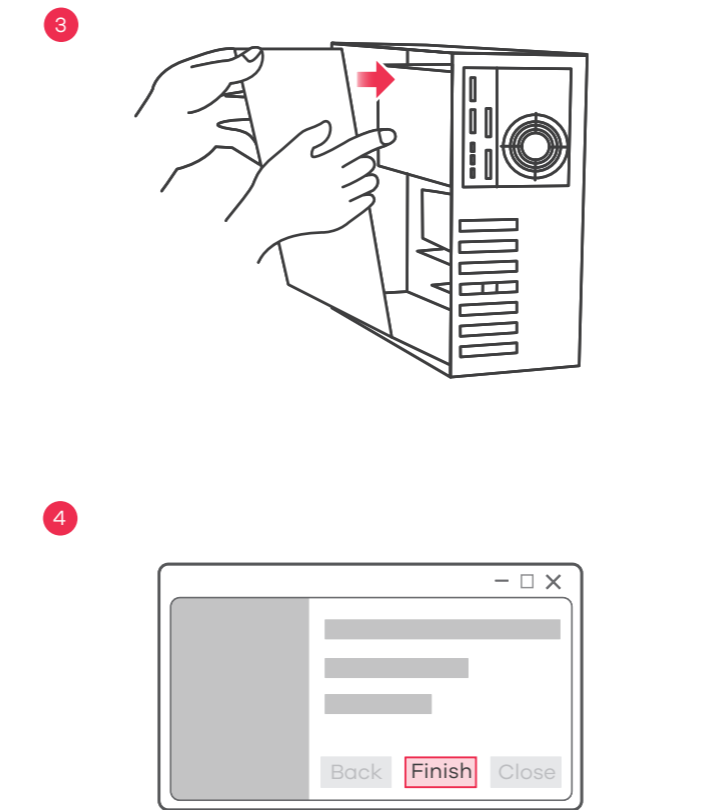
A computer with an available PCI Express 2.0 slot using one of the following operating systems:

- Windows 7, 8.0, 8.1, 10 or Server 2012
- Linux 3.10, 3.12, 3.20, 4.20 or 4.40

Hardware Installation



- DK** ① Sluk for computeren, frakobl netledningen og fjern computerkabinettet.
② Indsæt XGN100F solidt i et ledigt PCIe-slot og fastgør derefter dets bagbeslag.
- NL** ① Schakel de computer uit, ontkoppel de stroomkabel en verwijder de behuizing van de computer.
② Plaats XGN100F stevig in een beschikbare PCIe sleuf en zet de achtersteun vast.
- NO** ① Slå av datamaskinen, koble fra strømledningen og fjern datamaskinens kabinett.
② Sett inn XGN100F i et ledig PCIe-spor, og fest den bakre braketten.
- FI** ① Sammuta tietokone, irrota virtajohto ja poista tietokoneen kotelo.
② Asenna XGN100F-kortti vapaaseen PCIe-paikkaan ja kiinnitä lukitussalpa.
- SE** ① Stäng av datorn, dra ur nätkabeln och avlägsna datorhöljet.
② Sätt i XGN100F ordentligt på en ledig PCIe-plats och säkra därefter dess bakre fäste.



- DK** ③ Sæt kabinettet tilbage på plads, tilslut computerens netledning og tænd igen for computeren.
④ Et understøttet operativsystem vil automatisk installere driveren, og give en meddelelse når det er gennemført.
- NL** ③ Plaats de behuizing van de computer terug, verbind de stroomkabel van de computer en schakel de computer weer aan.
④ Een ondersteund besturingssysteem zal de driver automatisch installeren en je op de hoogte stellen als dit is beëindigd.
- NO** ③ Sett på kabinettet igjen, koble til strømledningen og slå på datamaskinen igjen.
④ Et støttet operativsystem vil automatisk installere driveren og varsle deg når installeringen er fullført.
- FI** ③ Sulje kotelo, liitä tietokoneen virtajohto ja käynnistä tietokone.
④ Tuettu käyttöjärjestelmä asentaa laiteohjaimen automaattisesti ja ilmoittaa, kun asennus on valmis.
- SE** ③ Sätt tillbaka datorhöljet, anslut datorns nätsladd och slå på datorn igen.
④ Ett operativsystem som stöds kommer automatiskt att installera drivrutinen och meddela när den är klar.

LEDs

| | | |
|----------|-------|---|
| SPEED | Amber | On - 10G Connection. Off - Disconnected or fail. |
| | Green | On - 1G Connection. Off - Disconnected or fail. |
| ACTIVITY | Green | On - No Data Transmission. Blinking - Data transmission. Off - Disconnected or fail. |

Troubleshooting / Download Drivers

- Make sure your computer is using a supported operating system.
- Manually install the card driver. If a supported operating system does not automatically install the driver, go to https://www.zyxel.com/support/download_landing.shtml and search for XGN100F. Download the driver, and install it.

FCC

This device complies with Part 15 of the FCC Rules. Operation is subject to the following two conditions:
(1) This device may not cause harmful interference, and
(2) This device must accept any interference received, including Interference that may cause undesired operation.

Your Networking Ally



Warranty Card

Thank you for purchasing a Zyxel product. Zyxel has a reputation for delivering high quality, high performance products and services to our customers. We recommend that you now visit the Zyxel website and register your product online. This will mean you can receive the latest firmware, drivers and product related information. If you still have further questions or enquiries related to the product, please contact our subsidiaries worldwide. Please note that warranty terms may vary by region. Full detailed information is available on our website, here: http://www.zyxel.com/support/warranty_information.shtml

Purchase Information

Zyxel Product Name:

Hardware Serial Number:

Date of Purchase:

(In certain countries, the warranty will be validated with seller's signature and stamp):

Support Information

- EU**
<https://support.zyxel.eu>

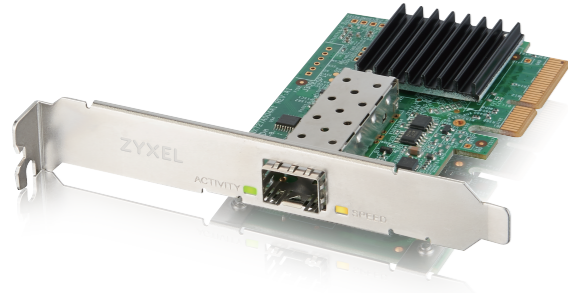
EU Importer
 Zyxel Communications A/S
 Gladsaxevej 378, 2. th. 2860 Søborg, Denmark
<https://www.zyxel.com/dk/da/>

US Importer
 Zyxel Communications, Inc
 1130 North Miller Street Anaheim, CA 92806-2001
<https://www.zyxel.com/us/en/>



XGN100F

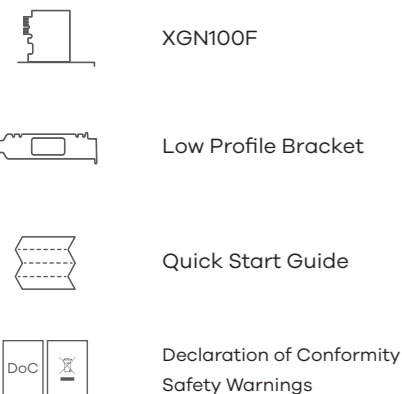
10G Network Adapter PCIe Card with Single SFP+ Port



Quick Start Guide

ČEŠTINA | MAGYAR | POLSKI | ROMÂNĂ
SLOVENČINA

Package Contents

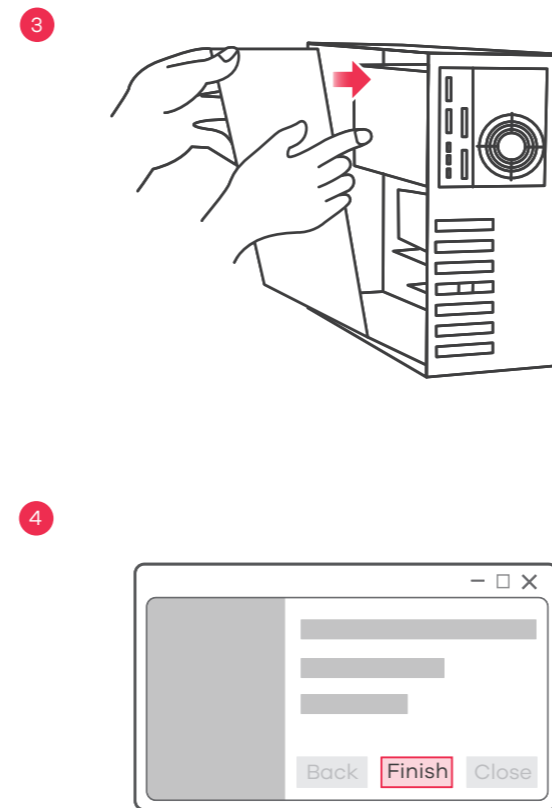
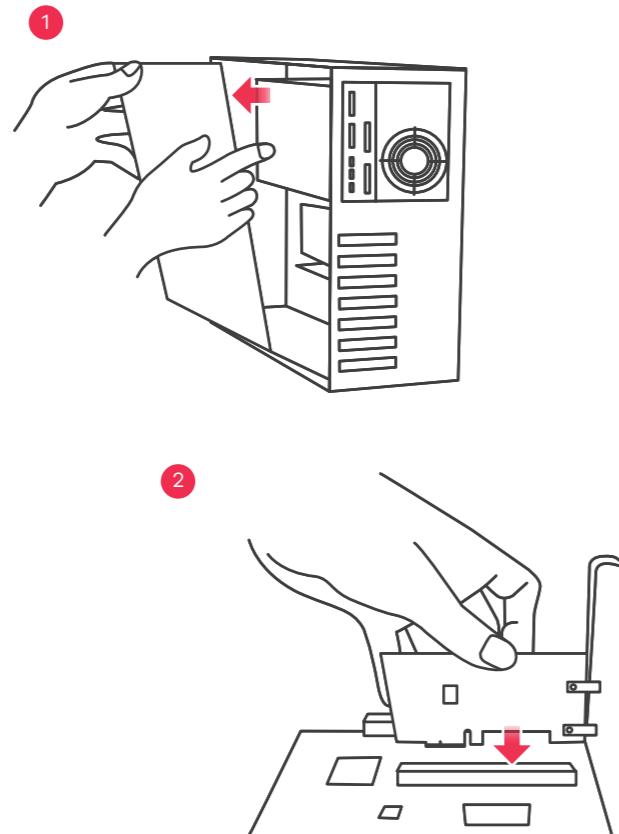


Requirements

A computer with an available PCI Express 2.0 slot using one of the following operating systems:

- Windows 7, 8.0, 8.1, 10 or Server 2012
- Linux 3.10, 3.12, 3.20, 4.20 or 4.40

Hardware Installation



- CZ** ① Vypněte počítač, odpojte napájecí kabel a sundejte kryt počítače.
② Zasuňte XGN100F napevno do volného slotu PCIe a zajistěte zadní podpěru.
- HU** ① Kapcsolja ki számítógépét, húzza ki a hálózati kábelt, majd távolítsa el a számítógép burkolatát.
② Helyezze stabilan az XGN100F eszközt egy szabad PCIe-foglalatba, majd rögzítse a hátsó keretét.
- PL** ① Wyłącz komputer, odłącz przewód zasilający i zdejmij obudowę komputera.
② Zdecydowanym ruchem umieść urządzenie XGN100F w dostępnym gnieździe PCIe, a następnie zabezpiecz tylny wspornik.
- RO** ① Opriți computerul, scoateți cablul de alimentare și deschideți carcasa computerului.
② Introduceți bine XGN100F într-un slot PCIe disponibil și fixați suportul de fixare de pe spatele lui.
- SK** ① Vypnite počítač, odpojte napájací kábel a demontujte kryt počítača.
② Do voľnej štrbiny PCIe dôkladne zasuňte zariadenie XGN100F a zaisťte zadnú konzolu.

- CZ** ③ Nasadte kryt počítače, připojte napájecí kabel a zapněte počítač.
④ Podporovaný operační systém automaticky nainstaluje ovladač a po dokončení zobrazí výzvu.
- HU** ③ Helyezze vissza a számítógép burkolatát, csatlakoztassa a hálózati kábelt, majd kapcsolja vissza a számítógépet.
④ A támogatott operációs rendszer automatikusan telepíti az illesztőprogramot, és jelzi, ha kész.
- PL** ③ Załóż obudowę, podłącz przewód zasilający i ponownie włącz komputer.
④ Obsługiwany system operacyjny automatycznie zainstaluje sterownik i wyświetli monit po zakończeniu operacji.
- RO** ③ Închideți carcasa computerului, conectați cablul de alimentare al computerului și reporniți computerul.
④ Un sistem de operare compatibil va instala automat driverul și vă va atenționa când această operație s-a finalizat.
- SK** ③ Nasadte kryt počítača, pripojte napájací kábel počítača a počítač zapnite.
④ Podporovaný operačný systém automaticky nainštaluje ovládač a po dokončení sa zobrazí výzva.

LEDs

| | | |
|----------|-------|---|
| SPEED | Amber | On - 10G Connection. Off - Disconnected or fail. |
| | Green | On - 1G Connection. Off - Disconnected or fail. |
| ACTIVITY | Green | On - No Data Transmission. Blinking - Data transmission. Off - Disconnected or fail. |

Troubleshooting / Download Drivers

- Make sure your computer is using a supported operating system.
- Manually install the card driver. If a supported operating system does not automatically install the driver, go to https://www.zyxel.com/support/download_landing.shtml and search for XGN100F. Download the driver, and install it.

FCC

This device complies with Part 15 of the FCC Rules. Operation is subject to the following two conditions:
(1) This device may not cause harmful interference, and
(2) This device must accept any interference received, including Interference that may cause undesired operation.

Your Networking Ally



Warranty Card

Thank you for purchasing a Zyxel product. Zyxel has a reputation for delivering high quality, high performance products and services to our customers. We recommend that you now visit the Zyxel website and register your product online. This will mean you can receive the latest firmware, drivers and product related information. If you still have further questions or enquiries related to the product, please contact our subsidiaries worldwide. Please note that warranty terms may vary by region. Full detailed information is available on our website, here: http://www.zyxel.com/support/warranty_information.shtml

Purchase Information

Zyxel Product Name:

Hardware Serial Number:

Date of Purchase:

(In certain countries, the warranty will be validated with seller's signature and stamp):

Support Information

EU
<https://support.zyxel.eu>

EU Importer

Zyxel Communications A/S
Gladsaxevej 378, 2. th. 2860 Søborg, Denmark
<https://www.zyxel.com/dk/da/>

US Importer

Zyxel Communications, Inc
1130 North Miller Street Anaheim, CA 92806-2001
<https://www.zyxel.com/us/en/>

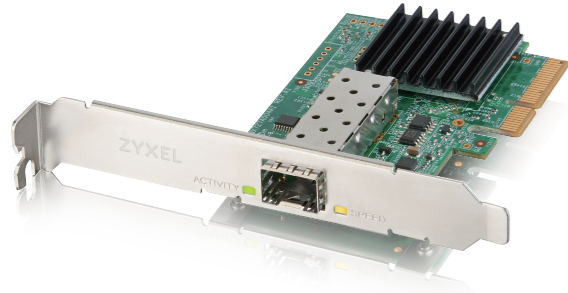
Copyright ©2020 Zyxel Communications Corp. All Rights Reserved.



ZYXEL

XGN100F

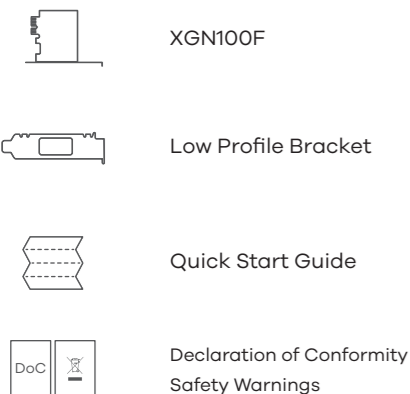
10G Network Adapter PCIe Card with Single SFP+ Port



Quick Start Guide

SLOVENŠČINA | TÜRK | БЪЛГАРСКИ | ภาษาไทย
繁體中文

Package Contents

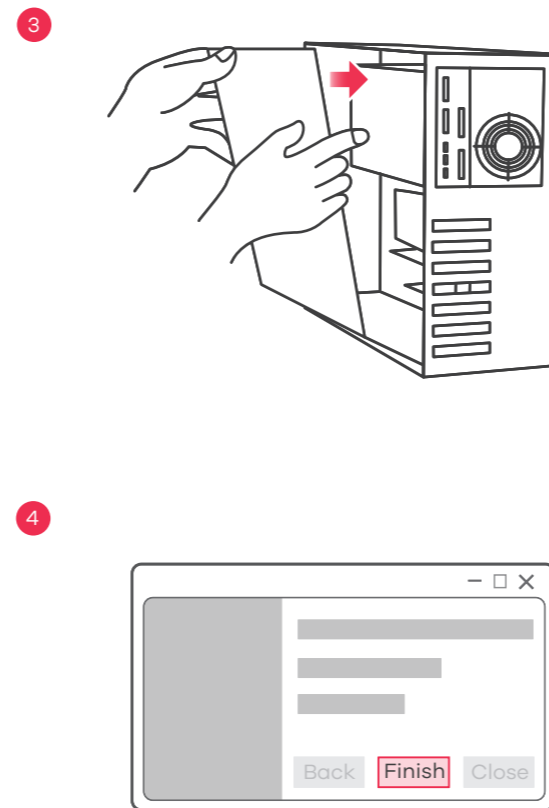
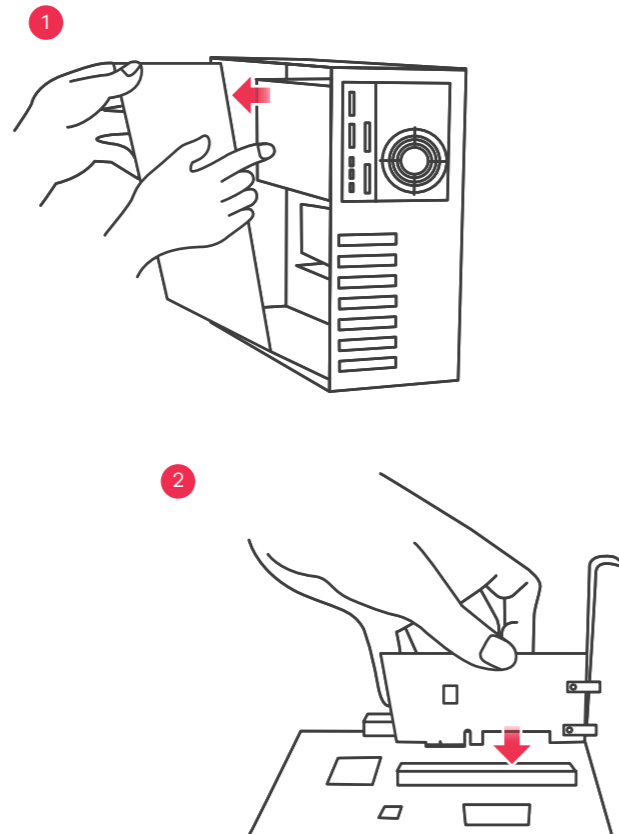


Requirements

A computer with an available PCI Express 2.0 slot using one of the following operating systems:

- Windows 7, 8.0, 8.1, 10 or Server 2012
- Linux 3.10, 3.12, 3.20, 4.20 or 4.40

Hardware Installation



- SI** ① Izključite računalnik, izklopite napajalni kabel in odstranite ohišje računalnika.
② Vstavite XGN100F trdno v dostopno režo PCIe in potem pritrdite njegov zadnji nosilec.
- TR** ① Bilgisayarınızı kapatın, güç kablosunu çıkarın ve bilgisayar kasasının içini açın.
② XGN100F'yi uygun bir PCIe yuvasına yerleştirin ve arka braketini sabitleyin.
- BG** ① Изключете компютъра, извадете захранващия кабел и отстранете кутията на компютъра.
② Поставете продукта XGN100F в свободен PCIe слот и фиксирайте задната скоба.
- TH** ① ปิดเครื่องคอมพิวเตอร์, ถอดสายไฟและเปิดฝาเคสคอมพิวเตอร์ออก
② ติดตั้ง XGN100F ลงในสล็อต PCIe ที่ว่างอยู่ กดให้แน่น จากนั้นยึดด้านหลังด้วยน็อต
- 繁中** ① 關閉您的電腦，移除電源線，打開機殼。
② 將XGN100F安裝至PCIe插槽，並確保其完全插入並固定好。

- SI** ③ Vrnite ohišje računalnika, povežite napajalni kabel in vključite računalnik.
④ Podprti operacijski sistem bo samodejno namestil gonilnik in vas bo obvestil, ko je končano.
- TR** ③ Bilgisayar kasasını kapatın, güç kablosunu bağlayın ve bilgisayarı açın.
④ Destekleyen bir işletim sistemi, sürücüyü otomatik olarak yükleyecek ve bittiğinde size bildirecektir.
- BG** ③ Поставете обратно кутията на компютъра, свържете захранващия кабел и включете компютъра отново.
④ Поддържана операционна система автоматично ще инсталира драйвера и ще ви подкани, когато това е готово.
- TH** ③ ปิดฝาเคสคอมพิวเตอร์กลับ ต่อสายไฟคอมพิวเตอร์แล้วเปิดคอมพิวเตอร์
④ ระบบปฏิบัติการที่รองรับจะติดตั้งไดรเวอร์โดยอัตโนมัติและแจ้งให้คุณทราบเมื่อดำเนินการเสร็จ
- 繁中** ③ 重新裝回機殼，連接電源線，並將電腦開機。
④ 電腦作業系統應會自動偵測及安裝驅動程式，並提示安裝已完成。

LEDs

| | | |
|----------|-------|--|
| SPEED | Amber | On - 10G Connection. Off - Disconnected or fail. |
| | Green | On - 1G Connection. Off - Disconnected or fail. |
| ACTIVITY | Green | On - No Data Transmission. Blinking - Data transmission. Off - Disconnected or fail. |

Troubleshooting / Download Drivers

- Make sure your computer is using a supported operating system.
- Manually install the card driver. If a supported operating system does not automatically install the driver, go to https://www.zyxel.com/support/download_landing.shtml and search for XGN100F. Download the driver, and install it.

FCC

This device complies with Part 15 of the FCC Rules. Operation is subject to the following two conditions:
(1) This device may not cause harmful interference, and
(2) This device must accept any interference received, including interference that may cause undesired operation.

ZYXEL

Your Networking Ally



Warranty Card

Thank you for purchasing a Zyxel product. Zyxel has a reputation for delivering high quality, high performance products and services to our customers. We recommend that you now visit the Zyxel website and register your product online. This will mean you can receive the latest firmware, drivers and product related information. If you still have further questions or enquiries related to the product, please contact our subsidiaries worldwide. Please note that warranty terms may vary by region. Full detailed information is available on our website, here: http://www.zyxel.com/support/warranty_information.shtml

Purchase Information

Zyxel Product Name: _____

Hardware Serial Number: _____

Date of Purchase: _____

(In certain countries, the warranty will be validated with seller's signature and stamp):

Support Information

- EU, Turkey and Russia**
🌐 <https://support.zyxel.eu>
- Taiwan**
☎ + 886 2 2739 9889
✉ retail@zyxel.com.tw
- Thailand**
☎ + 66 2831 5315
✉ support@zyxel.co.th

EU Importer
Zyxel Communications A/S
Gladsaxevej 378, 2. th. 2860 Søborg, Denmark
<https://www.zyxel.com/dk/da/>

US Importer
Zyxel Communications, Inc
1130 North Miller Street Anaheim, CA 92806-2001
<https://www.zyxel.com/us/en/>

Copyright ©2020 Zyxel Communications Corp. All Rights Reserved.

