

MS236WT

Your advantages

The EIZO MS236WT offers first-class image quality with a 16:9 aspect ratio, as well as modern multi-touch operation for digital image distribution. The device ships with a preset DICOM tone curve. Hence it displays the graytones of radiological images correctly. The advantage of this is that the screen display is much better suited to clinical review than images shown on conventional computer monitors. Thanks to IPS-LCD it also offers wide viewing angles. This makes the picture clear and distinct from various directions of view. The MS236WT detects up to 10 touches simultaneously and permits smooth and accurate stylus input. It ignores erroneous input, such as from the ball of the hand.

- ✓ 2 megapixel colour LCD monitor with touchscreen
- ✓ Greyscale display with DICOM tone curve
- ✓ Multi-touch operation (for example zooming, scrolling, turning, moving)
- ✓ Smooth, precise stylus input with hand ball detection
- ✓ IPS-LCD panel with wide viewing angle
- ✓ Flicker-free picture display

Features

Excellent image quality for the finest details

Thanks to the high 2 Megapixels (colour) resolution, a strong contrast ratio of 1000:1 and stable brightness of up to 260 cd/m², the monitor offers excellent image quality. Even the differences between the finest details are shown – regardless of your viewing angle. This is a great advantage if multiple physicians are looking at the screen.

Fine, precise stylus input

The MS236WT contains reliable capacitive touch technology (PCAP) and detects movements with very high precision. In addition to the supplied passive input stylus, the monitor can also be used with standard active touchscreen styluses. Hence you can easily capture even small writing and character input via the screen.



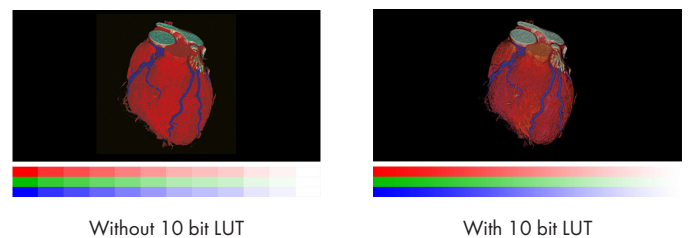
Ergonomic writing posture on a robust interface

The monitor can detect up to ten simultaneous touches, which means that multiple individuals can operate the monitor at the same time. Furthermore, the touchscreen is equipped with hand ball recognition. While writing, users can place their hands or arms on the monitor without accidentally triggering an input.

With a hardness of 5H, the glass surface is insensitive to scratches and guarantees to recognize up to 50 million touches.

One billion colour tones thanks to 10 bit LUT

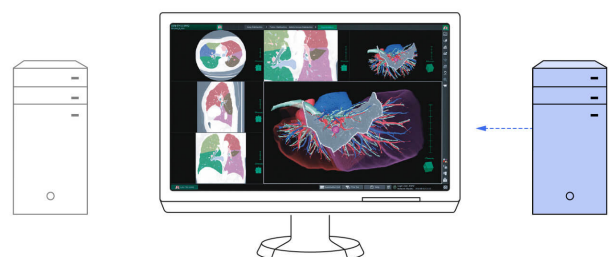
An internal 10 bit LUT controls colour rendering. The colour gradations are considerably more exact and finer than the standard 8 bit LUTs, making clinical review easier.



With digital, analogue, and audio connection

One DisplayPort and one DVI input allow the connection of two digital signals simultaneously. A D-sub input is available for an analogue signal. You can connect up to three computers simultaneously. You can switch between them automatically or manually, if desired.

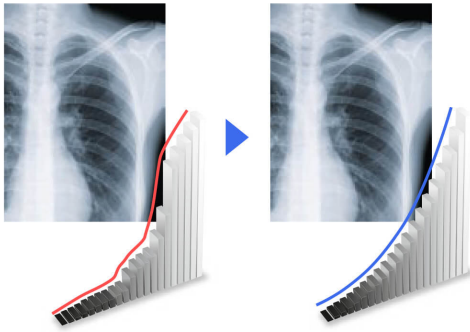
A loudspeaker and headphone connection are subtly integrated in the housing. The audio connection to the monitor takes place via the DisplayPort connection or the audio jack.



Features

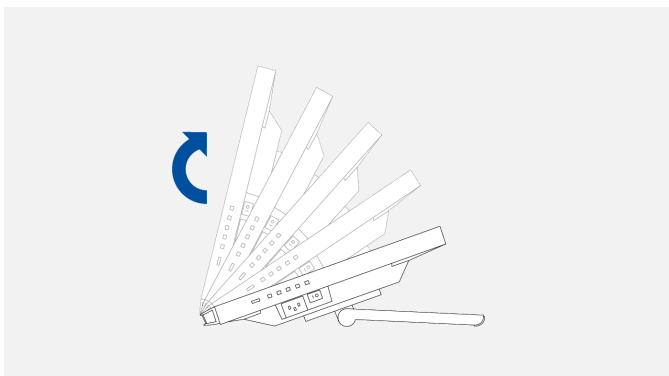
Display of DICOM® characteristic at the press of a button

EIZO measures and adjusts each tone of grey carefully so that the monitors comply with the DICOM® standard when delivered from the factory. The result is a particularly consistent gradation of grey tones, allowing for optimal radiological clinical reviews.



Reclining stand

The equipped stand provides flexible positioning to allow the monitor to rest on your desk like a laptop and recline back to your desired angle. This makes it easy to place the monitor in the ideal position for comfortable use in any environment.



Tilt by moving the base: 17° - 70°

For precise diagnoses: EIZO graphics card MED-XN51LP

The EIZO graphics card MED-XN51LP optimally supports the features, functions and settings of the RadiForce MS236WT. It enables precise diagnosis and can control several monitors simultaneously. EIZO offers technical support and warranty service for the graphics card.

[Display the specifications of the MED-XN51LP](#)



Three-year warranty

EIZO grants a three-year warranty. This is possible thanks to the highly developed production process based on a simple principle of success: sophisticated and innovative monitor technology, made from high-end materials.



Specification

General

Item no.	MS236WT
Case color	Black
Areas of application	Medicine
Product line	RadiForce
EAN	4995047050919

Display

Screen size [in inches]	23
Screen size [in cm]	58
Format	16:9
Viewable image size (width x height)	509.2 x 286.4
Resolution in MP	2 Megapixels (colour)
Ideal and recommended resolution	1920 x 1080 (Full HD)
Pixel pitch [mm]	0.264 x 0.264
Panel technology	IPS
Max. viewing angle horizontal	178 °
Max. viewing angle vertical	178 °
Number of colours or greyscale	16.7 million colours (DisplayPort, 8 Bit), 16.7 million colours (DVI, 8 Bit), 16.7 million colours (D-Sub, 8 Bit)
Colour palette/look-up table	1.06 billion colour tones / 10 Bit
Max. brightness (typical) [in cd/m ²]	260
Max. dark room contrast (typical)	1000:1
Response time grey-grey alternation (typical) [in ms]	11
Backlight	LED

Features & control

Preset colour/greyscale modes	User1, User2, sRGB, DICOM
DICOM tone curve	✓
No flickering thanks to hybrid controls	✓
Built-in speakers	✓
OSD language	de, en, fr, es, it, se, ja, zh
Adjustment options	Brightness, Hand ball detection, Gamma, Colour saturation, Colour temperature, DICOM tonal value, OSD language, Interpolation, Off Timer
Integrated power unit	✓
Touchscreen	✓
Touch panel type	Projected capacitive (PCAP)
Touch compatible OS	Windows 10, Windows 8.1 (64-bit/32-bit), Windows 7 (64-bit/32-bit)
Touch points	10

Ports

Touch port	USB
Signal inputs	1 x DisplayPort, 1 x DVI-D, 1 x D-sub
USB specification	USB 2.0
USB upstream ports	1 x type B
USB downstream ports	2 x type A
Video signal	DisplayPort, DVI (TMDS), RGB Analog
Control port	USB-Protocol
Sync formats	Separate
Audio input	3.5 mm stereo jack, DisplayPort
Audio output	3.5 mm stereo jack

Electric data

Frequency	Digital: 31-64 kHz/59-61 Hz; DisplayPort: 31-68 kHz/59-61 Hz; Analogue: 31-81 kHz/55-76 Hz
Power consumption (typical) [in watt]	19
Maximum Power Consumption [in watt]	42
Power Save Mode [in watt]	0.7
Power consumption off [in watt]	0
Power supply	AC 100-120 V / 200-240 V, 50/60 Hz
Power management	✓

Dimensions & weights

Dimensions [mm]	556,7 x 143,9-353,9 x 216,3-401,3
Weight [in kilograms]	6.6
Dimensions without stand [mm]	556,7 x 339,2 x 54
Weight without stand [in kilograms]	6
Housing dimension details	Dimension drawing (PDF)
Incline forward/backward	17 ° / 70 °
Pivot	15° - 70°
Hole spacing	VESA standard 100 x 100 mm

Certification & standards

IP rating	IPX0
Operating temperature	5-35°C, 20-80% (R.H., non condensing)
Certification	CE (Medical Device), EN 60601-1, UL60601-1, CSA C22.2 Nr. 601-1, IEC60601-1, VCCI-B, FCC-B, CAN ICES-3 (B), C-Tick, RoHS, WEEE, CCC, GOST-R

Software & accessories

Additional supply	Power cord, Signal cable D-sub - D-sub, Signal cable DVI-D - DVI-D, Signal cable DisplayPort - DisplayPort, USB 2.0 cable, Audio cable, EIZO LCD Utility Disk (incl. PDF manual), Touch pen incl. mount, Cleaning cloth
Accessories	TP5 (Touch panel pointers)
Recommended graphics card	MED-XN51LP

Warranty

Warranty and service	3 years including on-site replacement service
----------------------	---